

North Line Section 27-T195-3W-2

4643
State of Kansas, McPherson Co. SS.
This instrument was filed for record
on the 29 day of July, A.D. 1976
at 8:00 clock A.M. and duly registered
to book 31-A on page 146
Frank Nelson
Register of Deeds

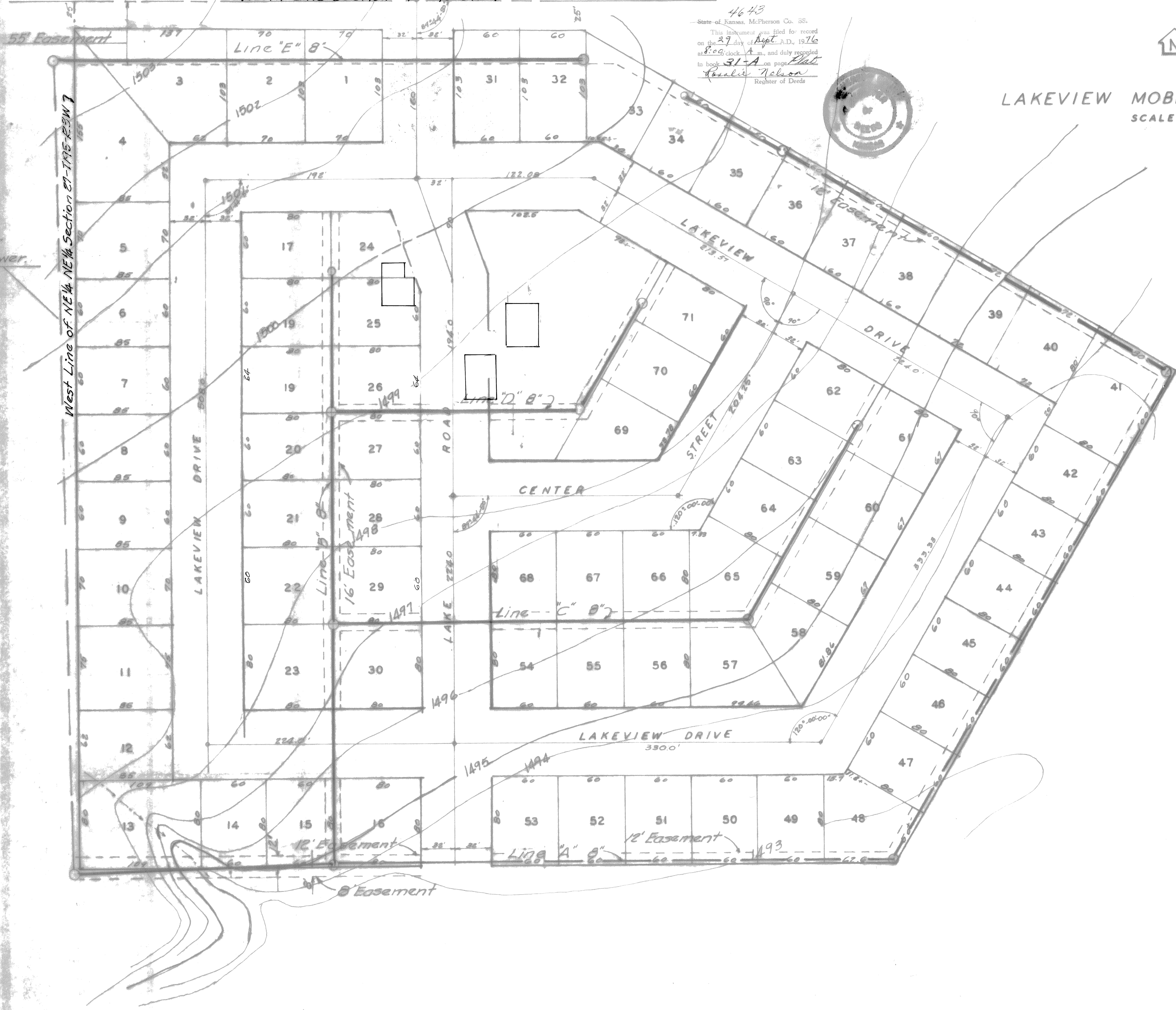


LAKEVIEW MOBILEHOME PARK

SCALE 1"=50'

Existing 8" Sanitary Sewer

West Line of NE 1/4 NE 1/4 Section 27-T195-3W-2



OWNERS SIGNATURE & REQUEST

STATE OF KANSAS.) SS.
MC PHERSON COUNTY)

Be it known, We the Undersigned owners of the attached Plat, do hereby request that it be accepted an annexed to the City of McPherson Kansas, with the following provisions. - #1 The Sanitary Sewer as shown, shall be constructed according to State Standards, paid for by the owner, given to and operated by the City of McPherson Kansas including easements shown. - #2 Streets shall be 24' Wide Back to Back, Curb and Gutter asphalt pavement, shall be constructed and maintained by the owner. We further request annexation of all the NE 1/4 of the NE 1/4 of Section 27-Township 19S-Range 3W, Lying north of the Rock Island Railroad, of which the attached Plat is a part of.

Signed this 4 day of May 1976 at McPherson Kansas.

Frank Nelson
owner or agent.

APPROVAL OF CITY PLANNING COMMISSION

STATE OF KANSAS.) SS.
MC PHERSON COUNTY)

Be it known, the City of McPherson, Planning Commission, has this day reviewed the attached Plan, and request and do hereby recommend its acceptance to the McPherson City Commission

Signed this day of 1976 at McPherson, Kansas.

Ray D. Sapp
Chairman

APPROVAL OF CITY COMMISSION

STATE OF KANSAS) SS.
COUNTY OF MC PHERSON)

Be it known, the City Commission of McPherson, Kansas have reviewed this Plan and request, and have this day approved and accepted the same.

Signed this 12th day of July 1976, at McPherson, Kansas.

Frank Nelson
Mayor

Attest: This instrument approved this (22nd day of July) 1976.

Frank Nelson
McPherson City Clerk & Seal.

SCALE:	APPROVED BY:	DRAWN BY:
DATE:		REVISED:
Frank Ltd. 647 E. 10th St. McPherson, KS 67460		
		DRAWING NUMBER: